

Light efficiency:

108 Lumen/Watt

Color temperature:

3630 K

Light quality:

CRI:95.6, R_g:91.2, R_f:98.5

P: 2 / V: - / F: 2

Output: 1550 lm

Peak: 844 cd

Power: 14.4 W

Voltage: 120 V

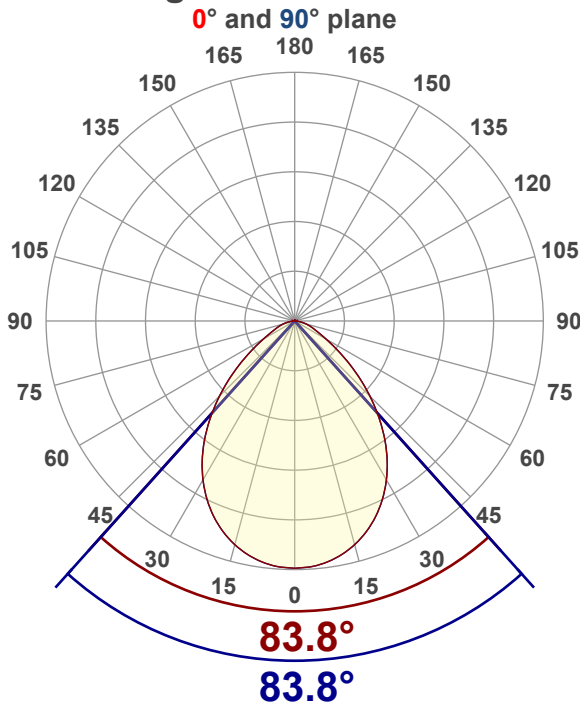
Current: 0.121 A

PF: 0.99

THD: 8.05 %



Angular Distribution



Product name:

SLMB6-16W-CCT-XX - 3500K

Test Date:

11/20/2025

Beam Angle (50% of the brightness of the centre):
83.8°

Field Angle (10% of the brightness of the centre):
130.1°

Cut Off Angle (2.5% of the brightness of the centre):
161.7°

Beam Details

*measured at centre of beam

Mounting Height (feet)/(meter)	Lux*	Footcandles*	Beam width (feet) / (meter)
4 ft / 1.2 m	567 lx	53 fc	7.2 ft / 2.2 m
8 ft / 2.4 m	142 lx	13 fc	14.4 ft / 4.4 m
12 ft / 3.7 m	63 lx	6 fc	21.5 ft / 6.6 m
16 ft / 4.9 m	35 lx	3 fc	28.7 ft / 8.8 m
20 ft / 6.1 m	23 lx	2 fc	35.9 ft / 10.9 m

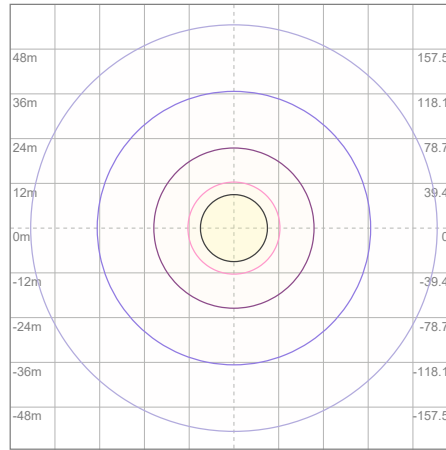
Beam center

Photometric Testing Report

Zonal Lumen Summary

Zone	Lumen	%Luminaire
0-30	619	39.94%
0-40	960	61.94%
0-60	1409	90.90%
60-90	140	9.03%
70-100	54.9	3.54%
90-120	0.206	0.01%
0-90	1549	99.94%
90-180	0.964	0.06%
0-180	1550	100.00%

ISO Lux Diagram



Lux at center:	91 lx
3%	2.73 lx
5%	4.55 lx
10%	9.10 lx
30%	27.30 lx
50%	45.50 lx

Conditions:
Number of planes: 8
Lux distribution on a surface when lamp is mounted at 3.05 meters from the surface.

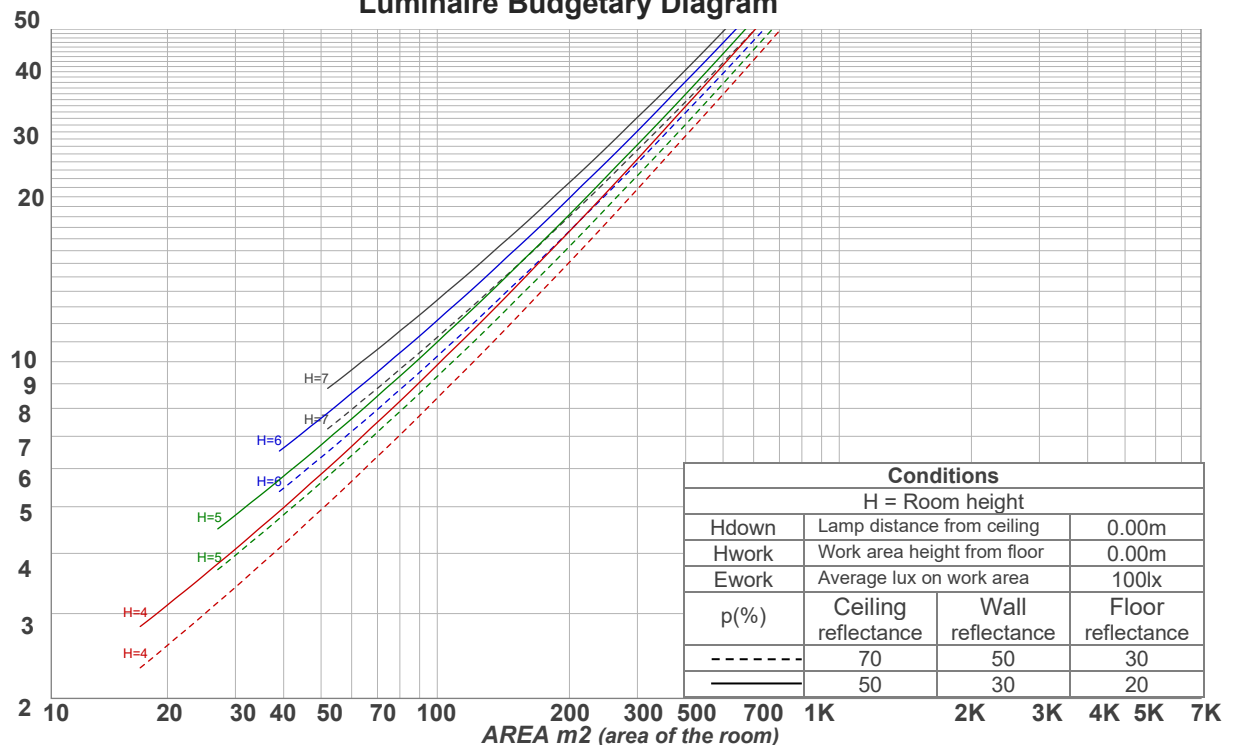
Mounting height: 3.05 meters (10 feet)

Coefficients of Utilization

Ceiling reflectance	80				70				50			30			10			0
Wall reflectance	70	50	30	10	70	50	30	10	50	30	10	50	30	10	50	30	10	0
Floor reflectance	20	20	20	20	20	20	20	20	20	20	20	20	20	20	20	20	20	0
RCR	(RCR: Room Cavity Ratio) Room Values are expressed as percentage of Lumens delivered to the task surface																	
0	119	119	119	119	116	116	116	116	111	111	111	106	106	106	102	102	102	100
1	111	107	104	101	108	105	102	99	101	98	96	97	95	93	93	92	90	88
2	103	96	90	86	100	94	89	85	91	87	83	88	84	81	85	82	79	77
3	95	86	80	74	93	85	79	73	82	77	72	79	75	71	77	73	70	68
4	88	78	71	65	86	77	70	64	74	68	64	72	67	63	70	66	62	60
5	82	71	63	57	80	70	63	57	68	62	57	66	60	56	64	59	55	54
6	77	65	57	51	75	64	56	51	62	56	51	61	55	50	59	54	50	48
7	71	59	52	46	70	59	51	46	57	51	46	56	50	45	55	49	45	43
8	67	55	47	42	65	54	47	42	53	46	42	52	46	41	51	45	41	39
9	63	51	43	38	62	50	43	38	49	43	38	48	42	38	47	42	38	36
10	59	47	40	35	58	47	40	35	46	39	35	45	39	35	44	38	35	33

LAMPS (number of lamps)

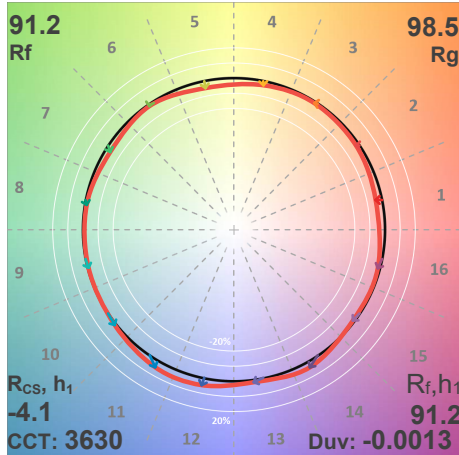
Luminaire Budgetary Diagram



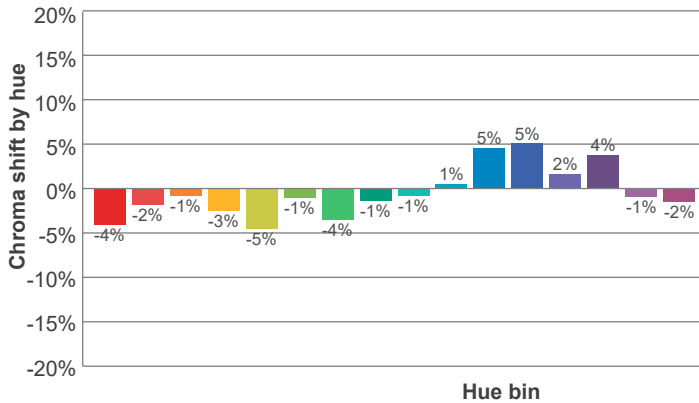
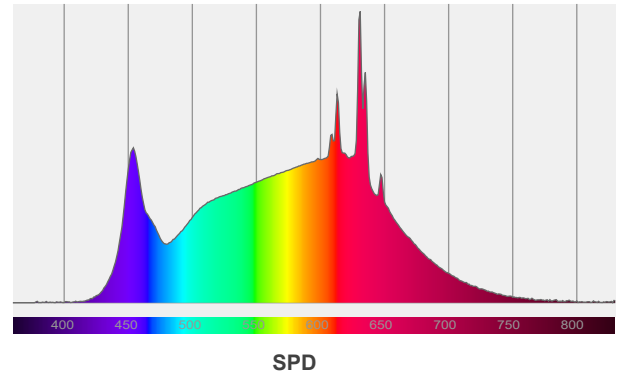
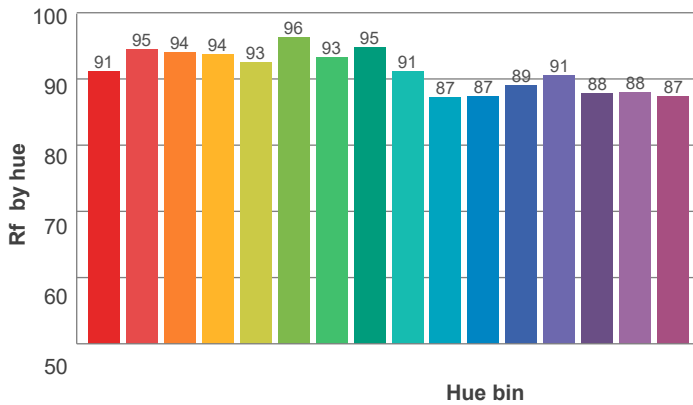
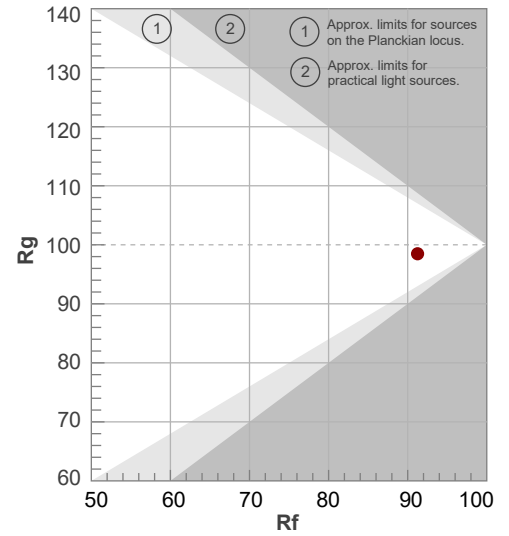
Conditions			
H = Room height			
Hdown	Lamp distance from ceiling	0.00m	
Hwork	Work area height from floor	0.00m	
Ework	Average lux on work area	100lx	
p(%)	Ceiling reflectance	Wall reflectance	Floor reflectance
-----	70	50	30
-----	50	30	20

ANSI/IES TM-30-18

P: 2 / V: - / F: 2



Hue Bin	R _f	Shifts (%)	
		Chroma	Hue
1	91	-4%	1%
2	95	-2%	1%
3	94	-1%	2%
4	94	-3%	-1%
5	93	-5%	0%
6	96	-1%	1%
7	93	-4%	3%
8	95	-1%	3%
9	91	-1%	6%
10	87	1%	9%
11	87	5%	7%
12	89	5%	-1%
13	91	2%	-7%
14	88	4%	-9%
15	88	-1%	-6%
16	87	-2%	-7%



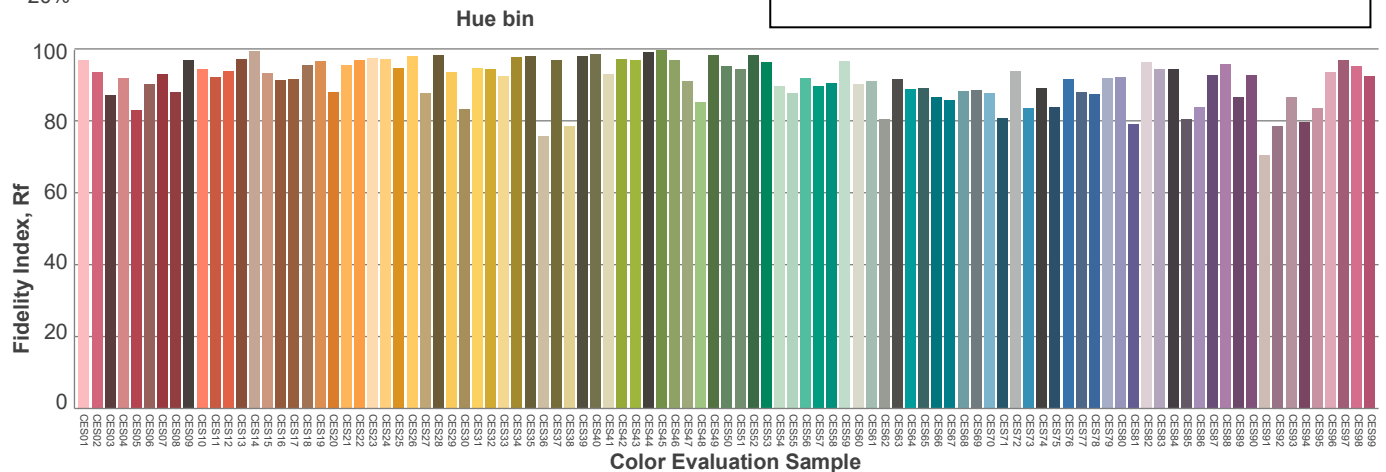
Red: 29%, Power=8.5mW

Blue: 13.9%, Power=13.3mW

Green: 28.5%, Power=19.7mW

UVA: 0%, Power=0.0mW

Dominant Wavelength: 583nm

1st Peak Wavelength: 631nm2nd Peak Wavelength: 613nm

Glare Evaluation According to UGR

p Ceiling		70	70	50	50	30	70	70	50	50	30
p Walls		50	30	50	30	30	50	30	50	30	30
p Floor		20	20	20	20	20	20	20	20	20	20
Room size X Y		Viewing direction at right angles to lamp axis					Viewing direction parallel to lamp axis				
2H	2H	23.1	24.0	23.2	24.3	24.5	23.1	24.0	23.2	24.3	24.5
	3H	23.5	24.5	23.9	24.8	24.9	23.5	24.5	23.9	24.8	24.9
	4H	23.7	24.7	24.1	24.9	25.2	23.7	24.7	24.1	24.9	25.2
	6H	23.9	24.8	24.2	25.1	25.4	23.9	24.8	24.2	25.1	25.4
	8H	24.0	24.8	24.3	25.1	25.5	24.0	24.8	24.3	25.1	25.5
	12H	24.0	24.8	24.3	25.1	25.6	24.0	24.8	24.3	25.1	25.6
4H	2H	23.2	24.2	23.6	24.4	24.7	23.2	24.2	23.6	24.4	24.7
	3H	23.9	24.7	24.3	25.1	25.5	23.9	24.7	24.3	25.1	25.5
	4H	24.2	24.9	24.6	25.3	25.9	24.2	24.9	24.6	25.3	25.9
	6H	24.4	25.2	24.9	25.5	25.9	24.4	25.2	24.9	25.5	25.9
	8H	24.5	25.2	25.0	25.5	25.9	24.5	25.2	25.0	25.5	25.9
	12H	24.6	25.1	25.1	25.5	26.0	24.6	25.1	25.1	25.5	26.0
8H	4H	24.3	24.9	24.8	25.3	25.7	24.3	24.9	24.8	25.3	25.7
	6H	24.7	25.1	25.2	25.6	26.1	24.7	25.1	25.2	25.6	26.1
	8H	24.8	25.2	25.3	25.8	26.4	24.8	25.2	25.3	25.8	26.4
	12H	24.9	25.2	25.5	25.7	26.4	24.9	25.2	25.5	25.7	26.4
12H	4H	24.3	24.8	24.8	25.2	25.7	24.3	24.8	24.8	25.2	25.7
	6H	24.7	25.1	25.2	25.6	26.3	24.7	25.1	25.2	25.6	26.3
	8H	24.8	25.2	25.4	25.7	26.3	24.8	25.2	25.4	25.7	26.3
Variation of the observer position for the luminaire distance S											
S = 1.0H		0.3 / -0.5					0.3 / -0.5				
S = 1.5H		1.0 / -1.3					1.0 / -1.3				
S = 2.0H		2.0 / -1.9					2.0 / -1.9				
Standard table		n/a					n/a				
Correction summand		n/a					n/a				
Corrected glare indices referring to 1550 lm total luminous flux											